


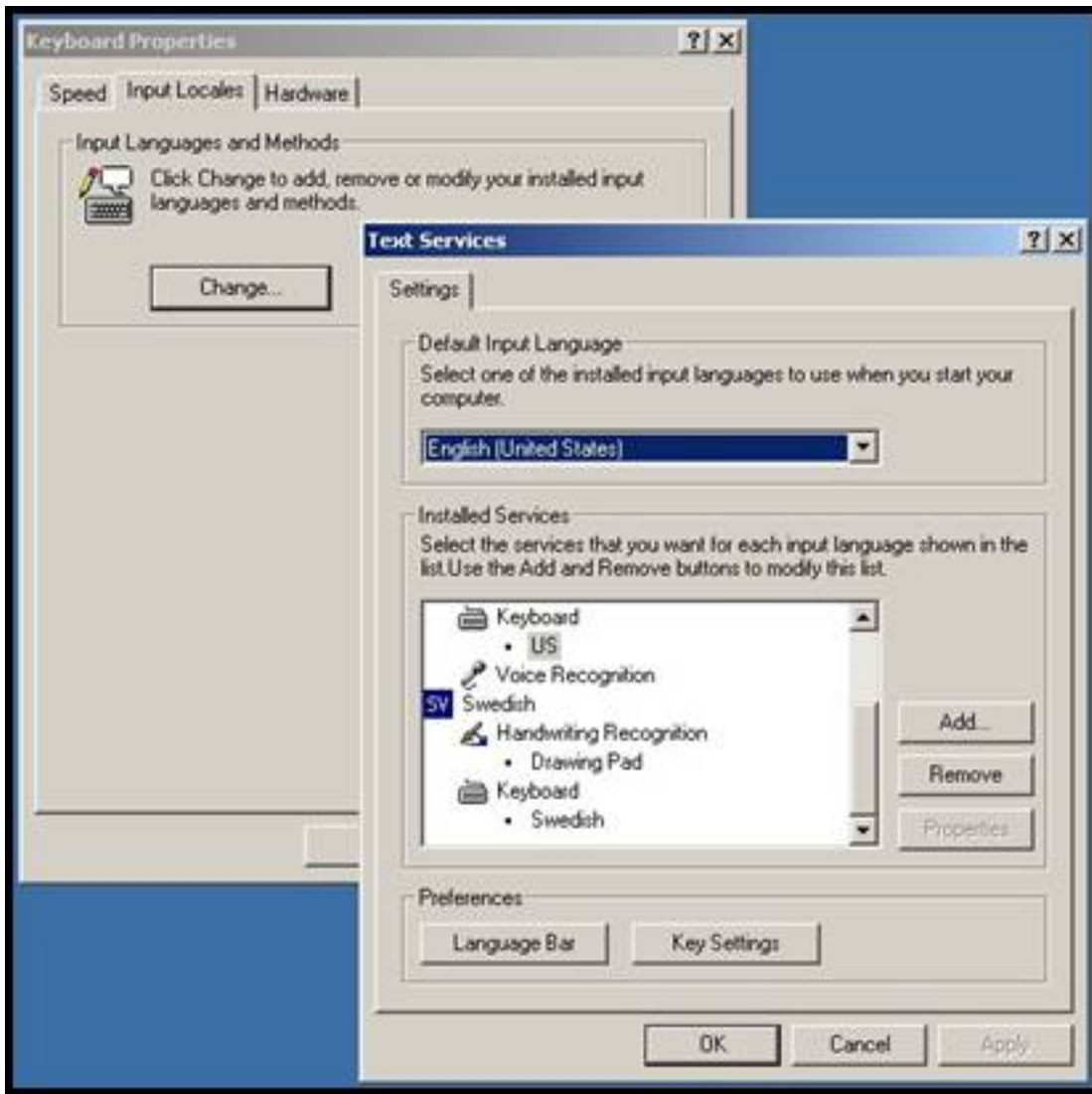
# Non-English Web Pages In Dreamweaver MX

The following describes how to use multiple languages in a web page using Dreamweaver MX for Microsoft Windows. The reader is assumed to have basic computer usage skills and access to a computer with Microsoft Windows 2000 and Dreamweaver MX.

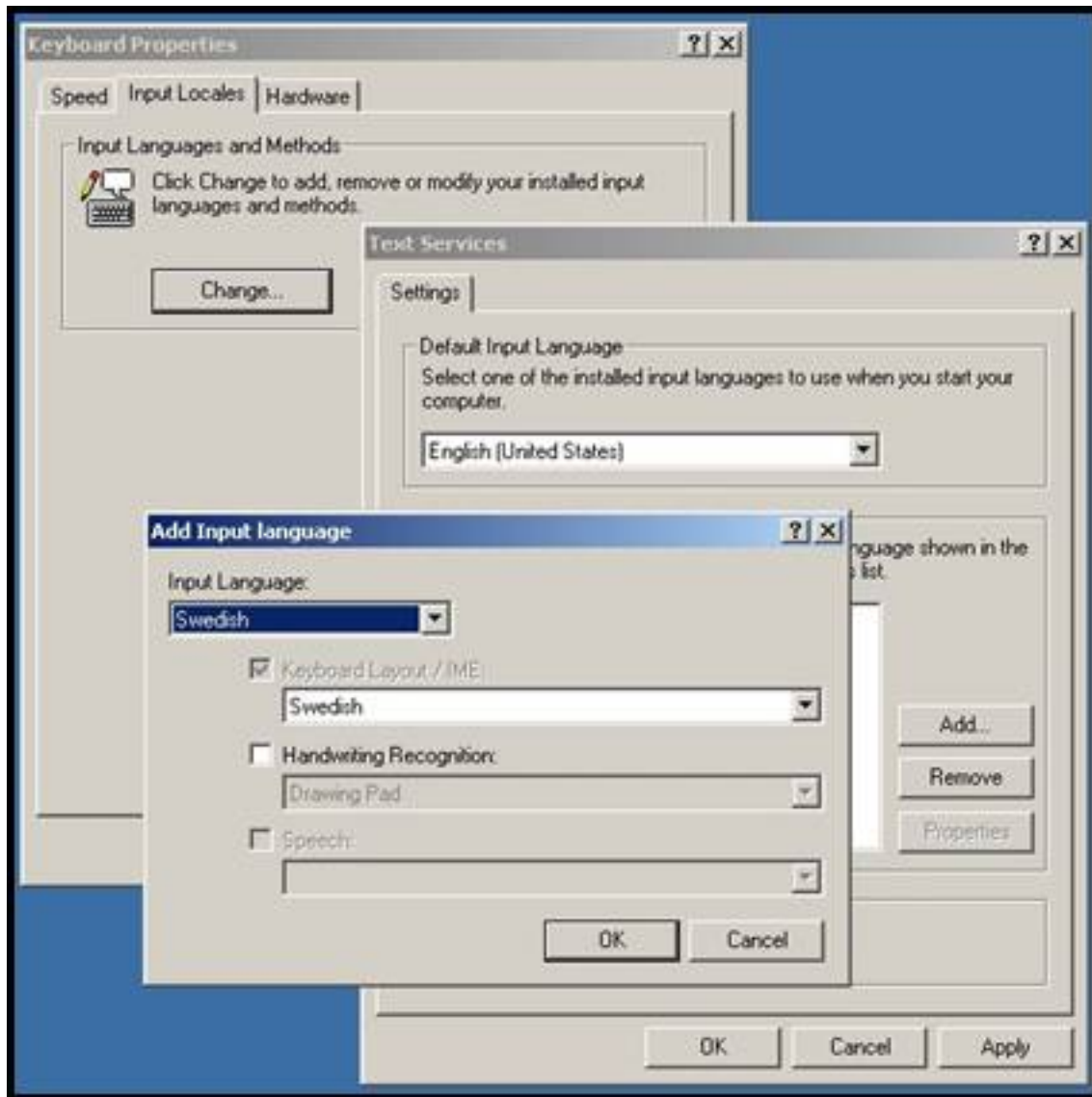
## 1. Installing Language Input

Before creating non-English web pages, Microsoft Windows must “know” the language we want to use. (The Hebrew language will be used as the example throughout this tutorial.)

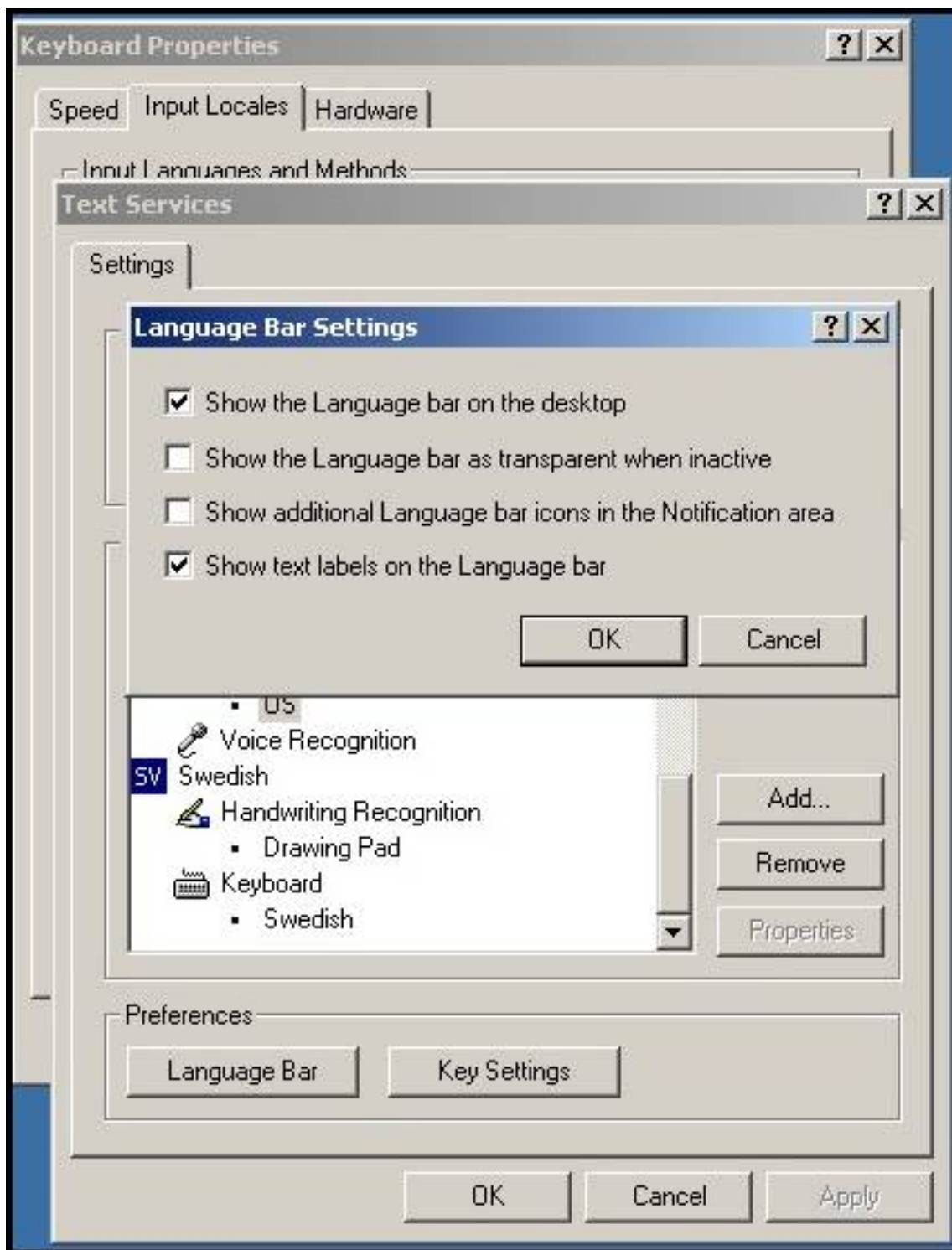
1. Left-click on the  button.
  1. Choose **Settings > Control Panel > Keyboard**. This will present you with the **Keyboard Properties** window.
    1. (If you're using Windows 2000, left-click the **Input Locales** tab at the top.)
  2. Left-click **Change...**
  3. This will open the **Text Services** window.



1. Left-click the **Add...** button. The **Add Input Language** window will open.



1. Select the language you wish to use, Swedish is shown in this example, under **Input Language**.
2. Left-click on **OK**.
  1. Your selection will appear under **Installed Services** in the **Text Services** window.
1. Next, left-click on Language Bar
  1. Check the box labeled “**Show the Language bar on the desktop**”.



1. Left -Click on **OK** and **minimize the language bar that popped up by right clicking on the bar and choosing minimize.**

1. Left-click on **OK** in the **Text Services** window.
2. Left -click on **OK** in the **Keyboard Properties** window.

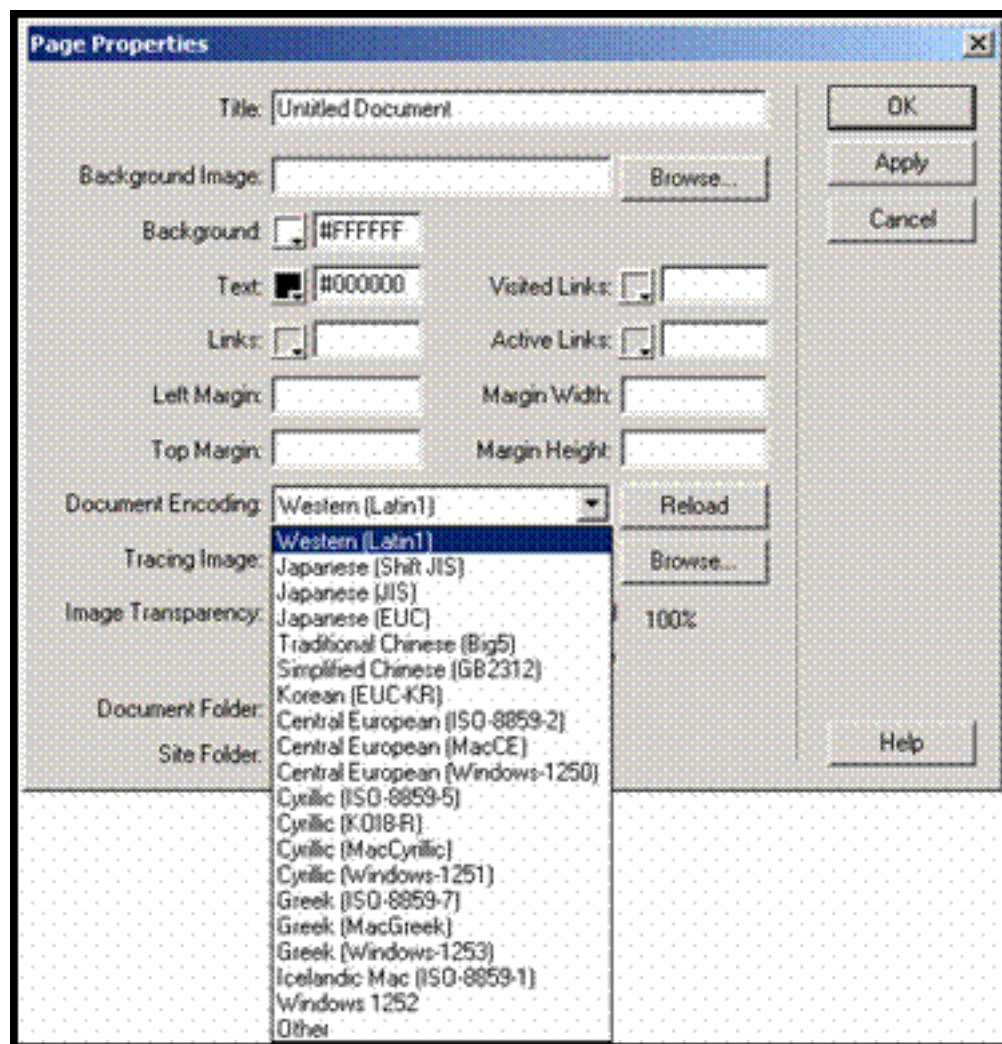
## 1. Changing Language Encoding In Dreamweaver MX

Dreamweaver must be told what language will be used. We accomplish this by setting the document's

encoding.

Dreamweaver already supports several non-English languages. In Dreamweaver, the document encoding setting for English is Western (Latin1), and should already be set as such. Notice how languages and their corresponding encoding setting are listed in Figure 4. They appear in the form **Language (Encoding Setting)**.

1. Open Dreamweaver MX. The document window will open (the window labeled **Untitled Document (Untitled-1) – Dreamweaver** at the top).
2. Choose **Modify > Page Properties** while in the document window.
  1. This will open the **Page Properties** window. Select the appropriate encoding setting next to **Document Encoding**. Most languages encode under Latin 1, also named ISO-8859-1. In our example, we choose **Latin 1** for Swedish. If the language you are looking for is not listed, choose **Other**.



2. Left-click on **OK**.

1. If you couldn't find the encoding in the list, try searching on internet for the right encoding using keywords such as: charset and "your language".

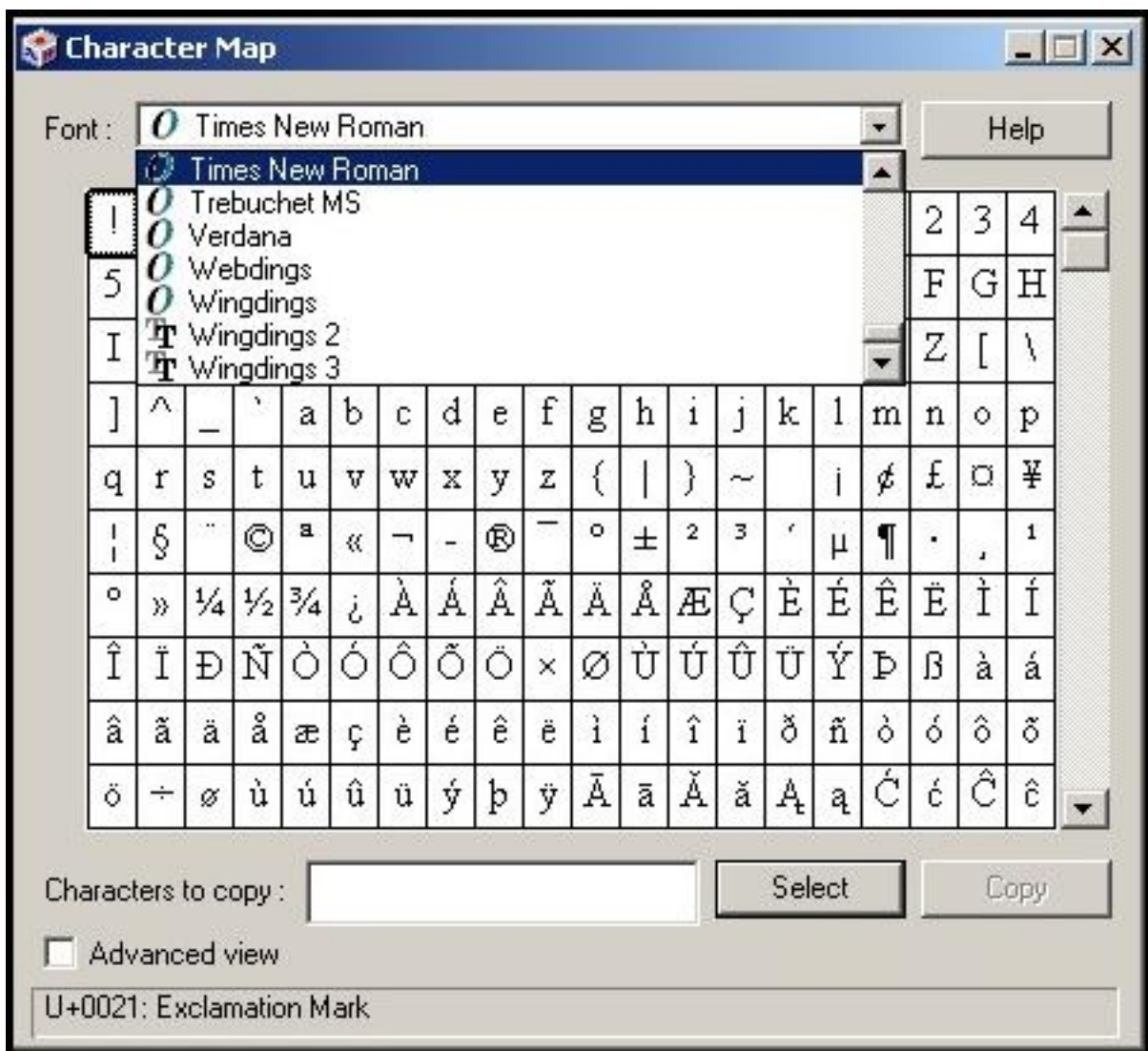
- You can enter the encoding manually in the header of the html document. Find the line that looks like this:

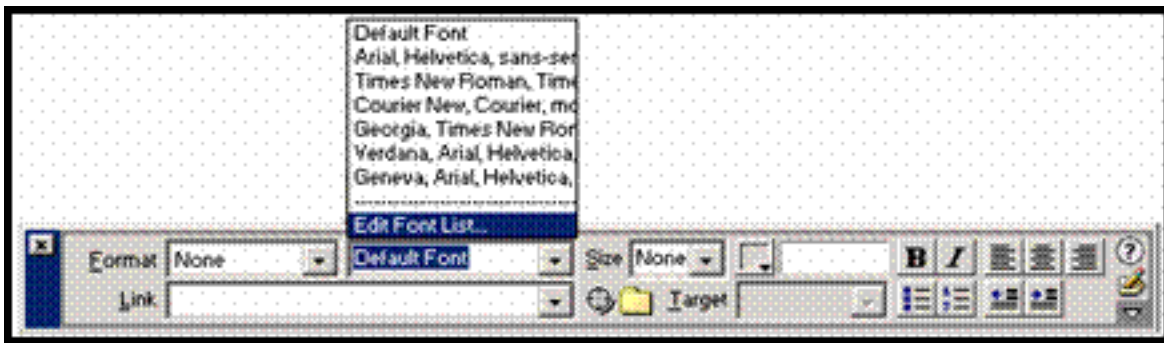
```
<meta http-equiv="Content-Type" content="text/html; charset=iso-8859-1">
```


and replace the charset with a different charset number, like one you may have found online during the previous step.

### 3. Editing The Font List


- Non-English computer languages require a font that can represent the characters in the selected language. To check if the characters are represented in a font, go to **“Start>Program>Accessories>System Tools>Character Map”**. Find a font with the characters you need, and remember or write down the name of it. To represent the font in Dreamweaver, use the fonts listed in the **Property Inspector**.





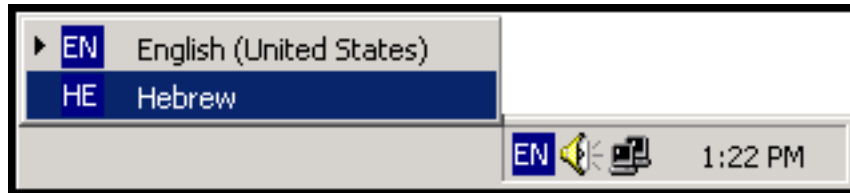
2. Locate the font list box in the **Property Inspector**. It should say “**Default Font.**” (If the **Property Inspector** is not showing, choose **Window > Properties.**)
3. Left-click on the  button to the right of the font list box in the **Property Inspector** while in the document window.
4. Left-click on “**Edit Font List.**” The **Edit Font List** window will open.



1. Left-click on a font under **Available Fonts**. The font you choose should be compatible with the language you wish to use in order to display correctly while still in Dreamweaver.
2. Left-click on the  button to the left of the **Available Fonts** list.
3. The selected font will appear under **Chosen Fonts** and also under **Font List**.
4. Left-click on **OK**.

## Switching Keyboard Language Input

After installing new language inputs (recall the **Installing Language** Input section at the beginning of this tutorial), Microsoft Windows should display the keyboard indicator, represented by the blue box on the taskbar on the lower right side of your screen). The keyboard indicator allows you to switch your keyboard strokes from one language to another. The normal setting, English, will be represented by the letters **EN** on the keyboard indicator.



1. Open the program to be used (Dreamweaver in this case).
2. Left-click on the **keyboard indicator**.
3. A listing of available input languages will appear. Select the language to be used in your program, Swedish in this example, which is represented by the letters **SE**.
4. Left-click within the document window.

Select an appropriate font from the font list in the **Property Inspector**. Now you may type inside the document window.